

Ireland's Unemployment & Youth Unemployment Crisis

Fianna Fail, Youth Unemployment Seminar
27th November 2013

Dr Micheál Collins
NERI (Nevin Economic Research Institute)
Dublin
mcollins@NERInstitute.net
 @MLGCollins
www.NERInstitute.net



Research for new economic policies

Outline

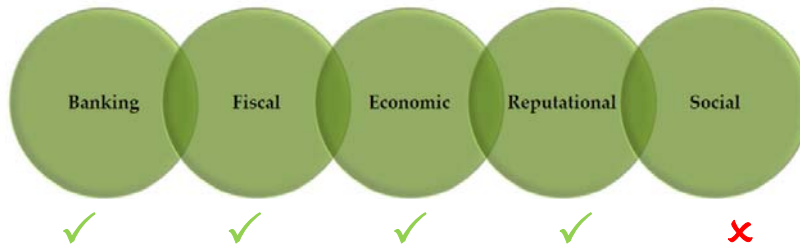
- 1. An Unemployment Crisis**
- 2. Youth Unemployment**
- 3. The Cost of NEETs**
- 4. Conclusions**



Research for new economic policies

1. An Unemployment Crisis

- NESCC (2009)
 - Ireland's Five Part Crisis



- Society left with serious socio-economic scars
- Limited public policy attention despite impact on individuals, households and communities
- Chief among these, the *Unemployment Crisis*

Figure 1: Ireland's U-Shaped Unemployment Curve, 1988-2013

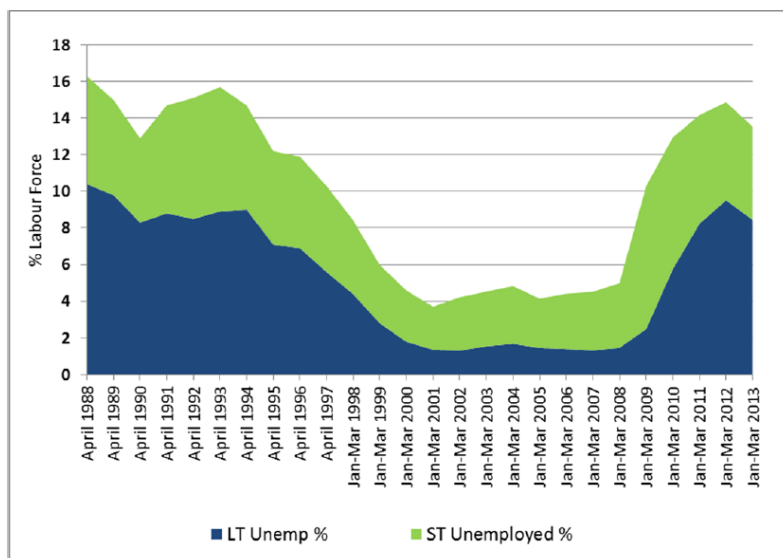


Table 1: Change in Employment by Sector and Occupation, 2007-2013 (000s of individuals ordered by size of change)

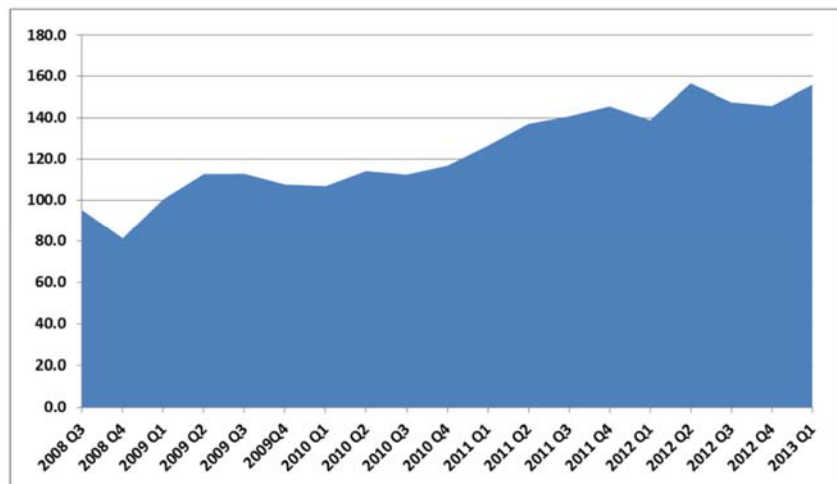
	2007 Q1	2013 Q1	Change
Overall	2,110.6	1,845.6	-265.0
By Sector			
Human health and social work activities	212.4	247.5	+35.1
Information and communication	66.8	77.4	+10.6
Other activities	94.3	99.8	+5.5
Education	142.6	147.5	+4.9
Financial, insurance and real estate activities	100.3	99.7	-0.6
Transportation and storage	93.7	88.8	-4.9
Professional, scientific and technical activities	108.9	103.9	-5.0
Public admin. and defence; compulsory social security	101.4	95.2	-6.2
Agriculture, forestry and fishing	108.5	96.2	-12.3
Accommodation and food service activities	133.8	120.3	-13.5
Administrative and support service activities	73.6	59.5	-14.1
Wholesale & retail trade; repair of motor vehicles	297.5	274.1	-23.4
Industry	301.8	238.0	-63.8
Construction	270.4	96.3	-174.1



•

•

Figure 5: Number of Underemployed, 2008-2013 (000s of individuals)



•

•

Unemployment projections (% of the labour force)

	2013	2014	2015	2016
IMF	13.7	13.3	12.8	12.4
Dept. of Finance	13.5	12.4	11.8	11.4
Central Bank	13.6	13.0		
ESRI	13.6	13.1		
NERI	13.8	13.3	12.8	12.1

•

•

2. Youth Unemployment

Table 2: Unemployment by age group, Q1 2013 (000s of individuals and % of the LF)

	Males	Females	Overall	Males	Females	Overall
	no.	no.	no.	%	%	%
Overall	186.9	105.1	292.0	15.9%	11.0%	13.7%
15-19	6.8	6.6	13.4	36.6%	33.8%	35.2%
20-24	25.1	15.3	40.4	29.5%	19.5%	24.7%
25-34	54.7	30.7	85.3	18.1%	10.8%	14.6%
35-44	44.6	24.4	69	13.9%	9.7%	12.1%
45-54	34.8	17.7	52.6	13.5%	8.7%	11.4%
55-59	13.5	6.4	19.8	14.2%	9.0%	12.0%
60-64	6.8	3.6	10.4	10.9%	9.1%	10.2%
65+	*	*	*	1.7%	3.4%	2.1%

Source: CSO Quarterly National Household Survey online database.

Notes: Differences in total is due to data rounding
 * - data not reported by CSO as sample is too small
 LF = labour force
 See further data in table A2 in the appendix

•

•

Table 2: Unemployment by age group, Q1 2013 (000s of individuals and % of the LF)

	Males no.	Females no.	Overall no.	Males %	Females %	Overall %
Overall	186.9	105.1	292.0	15.9%	11.0%	13.7%
15-19	6.8	6.6	13.4	36.6%	33.8%	35.2%
20-24	25.1	15.3	40.4	29.5%	19.5%	24.7%
25-34	54.7	30.7	85.3	18.1%	10.8%	14.6%
35-44	44.6	24.4	69	13.9%	9.7%	12.1%
45-54	34.8	17.7	52.6	13.5%	8.7%	11.4%
55-59	13.5	6.4	19.8	14.2%	9.0%	12.0%
60-64	6.8	3.6	10.4	10.9%	9.1%	10.2%
65+	*	*	*	1.7%	3.4%	2.1%

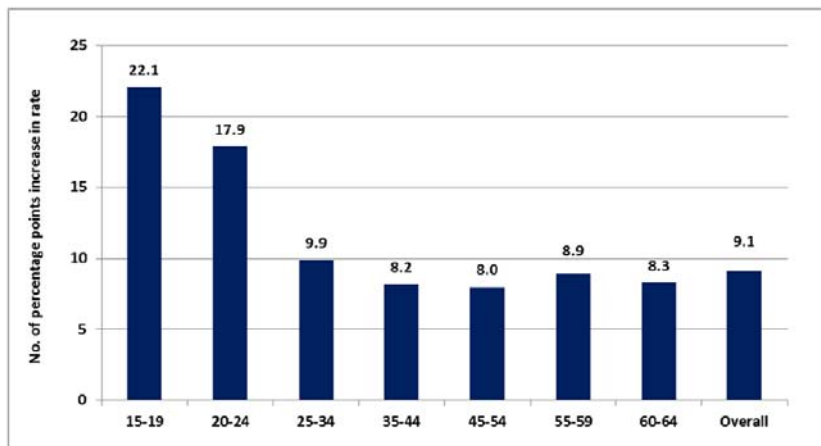
Source: CSO Quarterly National Household Survey online database.

Notes: Differences in total is due to data rounding
 * - data not reported by CSO as sample is too small
 LF = labour force
 See further data in table A2 in the appendix

•

•

Figure 7: Increase in the Unemployment rate by age group, Q1 2007-Q1 2013 (%)



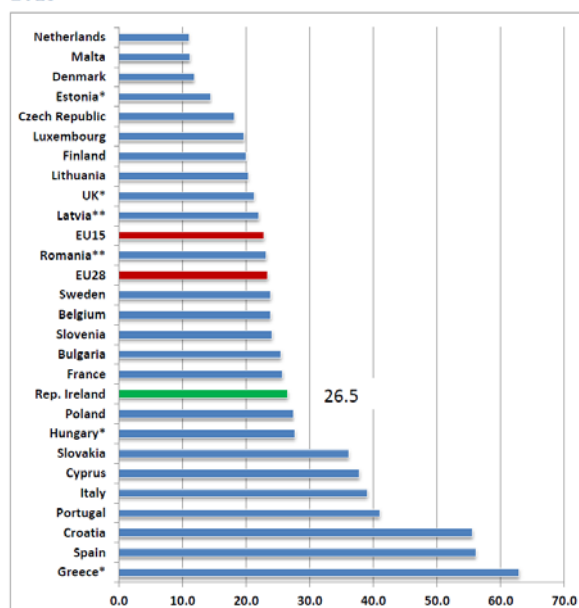
•

•

Table 5: Profile of the Unemployed and Long-Term Unemployed, Q1 2013 (000's individuals)

	All Unemployed	Less than 1 year	L-T Unemployed
Overall	292.0	108.8	180.5
Gender			
Male	186.9	59.0	126.2
Female	105.1	49.8	54.4
Age Group (all)			
15 - 24 years	53.8	26.5	26.5
25 - 44 years	154.3	56.3	96.4
45 years and over	83.9	26.0	57.6

Chart 2.2 Rates of Unemployment persons aged < 25 years, June 2013



Notes: *Data from May 2013; **Data from Mar 2013



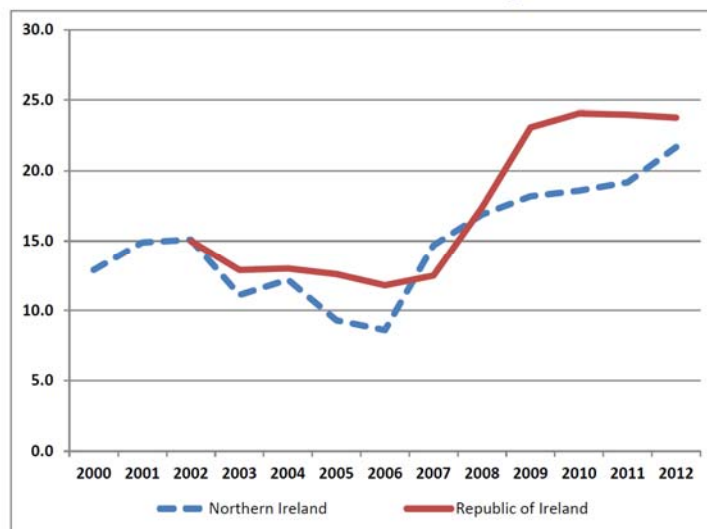
3. The Cost of NEETs

- A new concept
- Not in Employment, Education or Training
- Signals a potential problem
- Problematic if remaining as NEET
- Data (%) and Costs:

•

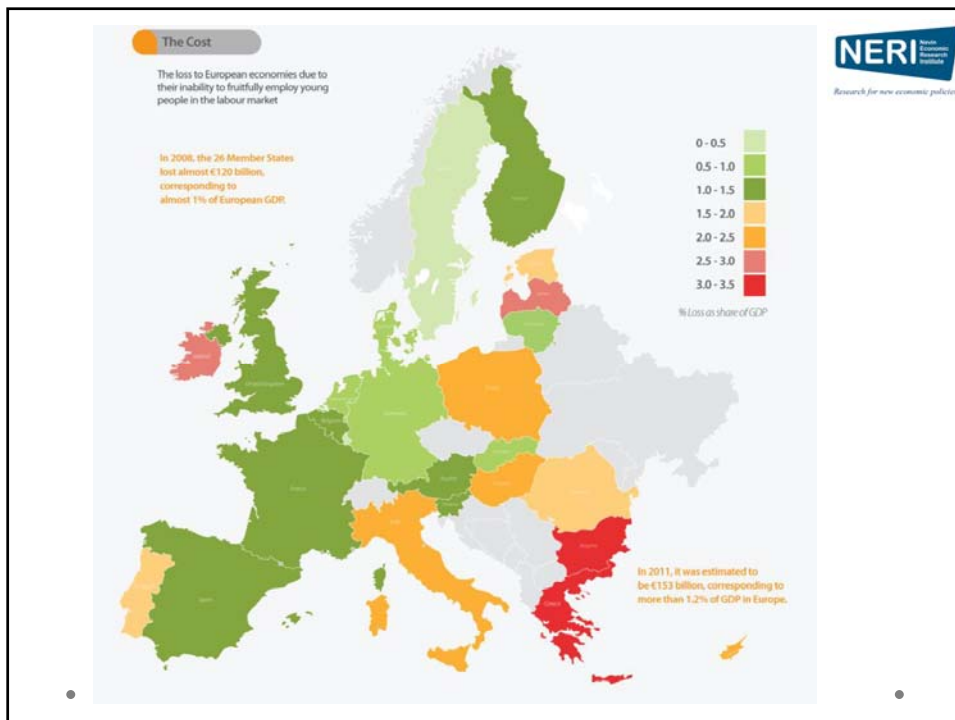
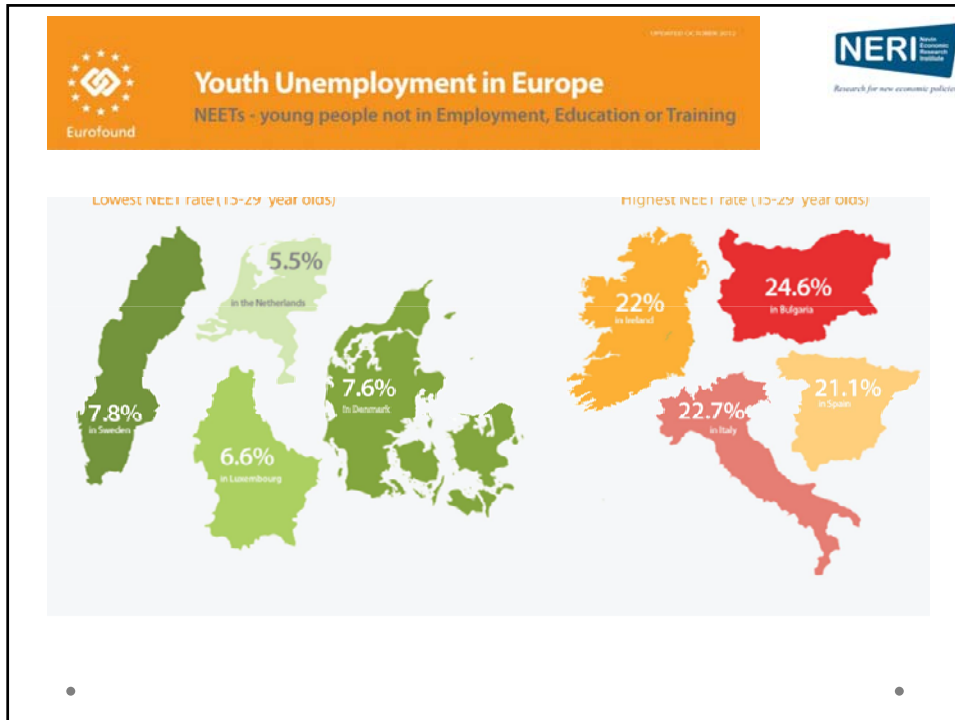
•

Chart 2.7 NEETs Northern Ireland and the Republic of Ireland



•

•



4. Conclusion

- An unemployment crisis
- Not going away
- LT element is very problematic
- Youth unemployment and NEETs a real concern
- Economic recovery would help
- But, those most distant from the labour market need assistance
- ‘Investing to save’
- Welcome focus on the issue and the policy options

Ireland's Unemployment & Youth Unemployment Crisis

Fianna Fail, Youth Unemployment Seminar
27th November 2013

Dr Micheál Collins
NERI (Nevin Economic Research Institute)
Dublin
mcollins@NERInstitute.net
 @MLGCollins
www.NERInstitute.net



Research for new economic policies