

NI Labour Market Statistics

Introduction

1. Overview of the main Labour Market Outputs
2. Focus on the Labour Force Survey
3. Wider Data Collection Transformation Programme

NI Statistics and Research Agency

Our purpose

Support decision makers in the formulation of evidence-based policy and inform public debate, through the production and dissemination of high quality, trusted, meaningful analysis; facilitate research and deliver the decennial population census and cost effective civil registration services.

Our mission

Provide citizens and decision makers with trusted insight on life in Northern Ireland.

UK Government Statistical Service

UK Wide – Office for National Statistics (ONS), Departments,
Devolved Administrations

Code of Practice for Statistics

Ensure official statistics serve the public

- ✓ Trustworthiness
- ✓ Quality
- ✓ Value

Labour Market Statistics

Labour Force Survey

Quarterly Employment Survey

Business Register and Employment Survey

Annual Survey of Hours and Earnings

Experimental Claimant Count

Redundancies

Earnings and Employment Statistics from Pay as You Earn (PAYE) Real Time Information (Experimental Statistics)

DWP alternative claimant count (GB only)



The employment
rate* was **71.2%**

*The proportion of people
aged 16-64 who were in work



Source: Labour Force Survey, December-February 2019



Northern Ireland
Statistics and Research Agency

Gníomhaireacht Thuaisceart Éireann
um Staitisticí agus Taighde

The economic inactivity rate* was 26.6%

*The proportion of people
aged 16-64 who were not working
and not looking for work, or not
available to work



Source: Labour Force Survey, December-February 2019



The unemployment rate* was **3.0%**

*The number of unemployed
people aged 16 and over as a
proportion of all employed
and unemployed people



Source: Labour Force Survey, December-February 2019



Women earn **3.5%** more than men

Women: **£12.94** per hour
Men: **£12.50** per hour



ASHE 2018
Median Full-Time Hourly Earnings (excluding overtime)



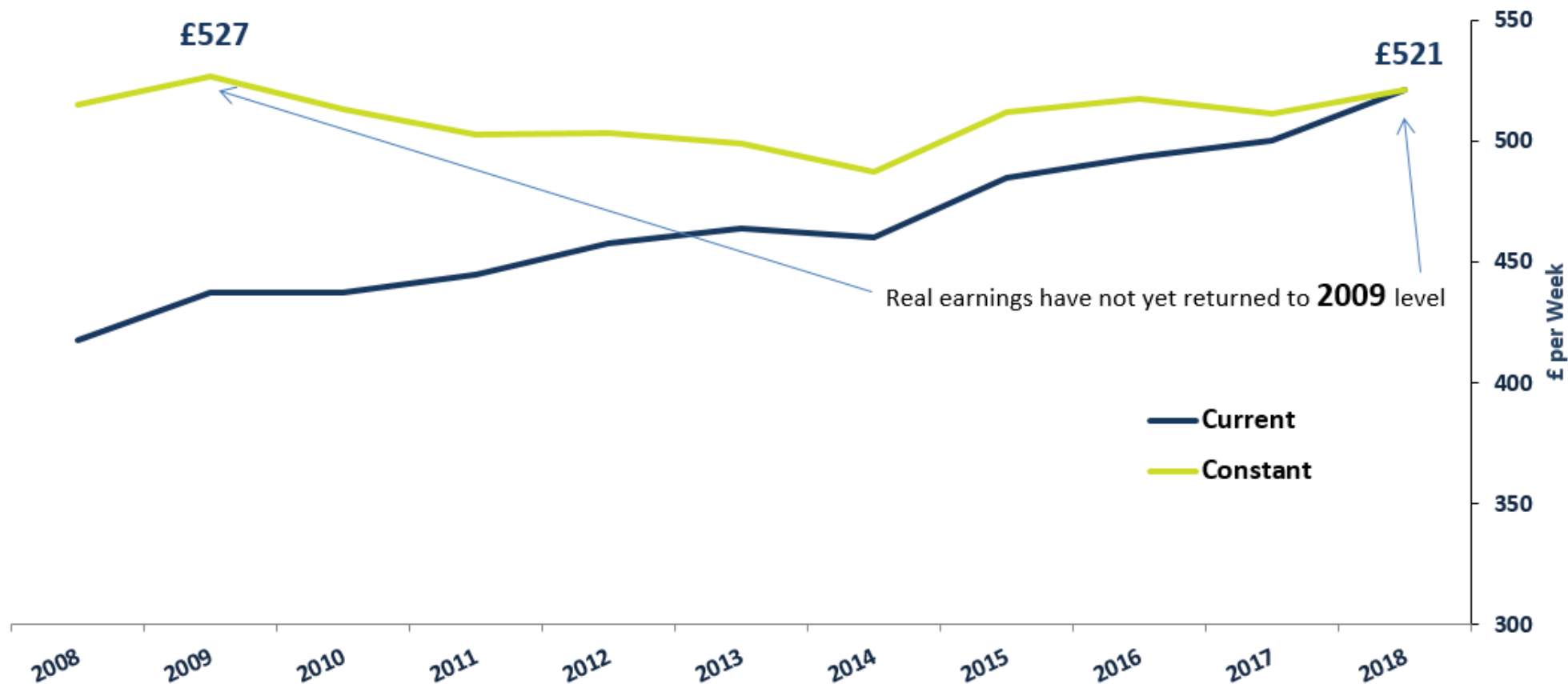
Northern Ireland
Statistics and Research Agency

Gníomhaireacht Thuaisceart Éireann
um Staitisticí agus Taighde

Current v Constant (2018) Prices

Median gross weekly earnings for full-time employees 2008-2018

Twitter: @ELMSNISRA



Note: there was a methodological changes during the series in 2011.

Source: Annual Survey of Hours and Earnings, 2018

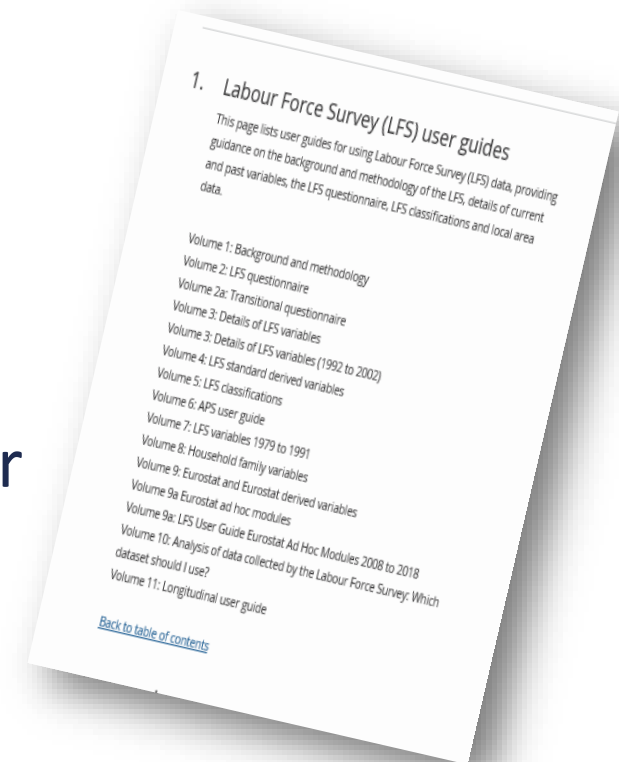
Date Published: 25th October 2018

Economic and Labour Market Statistics, Northern Ireland Statistics and Research Agency

Labour Force Survey (LFS)

- Largest household survey in the UK
 - Private households, NHS accommodation, student halls
- Been running since 1973

- Quarterly survey with a 5 wave structure
 - Approx 3,900 households allocated each quarter
 - 80% overlap between quarters



LFS - Recent Developments

Changes to timing of outputs

(Annual summary, removed quarterly supplement)

Increased the sample size

Operational trials to maintain response rates

Questionnaire changes

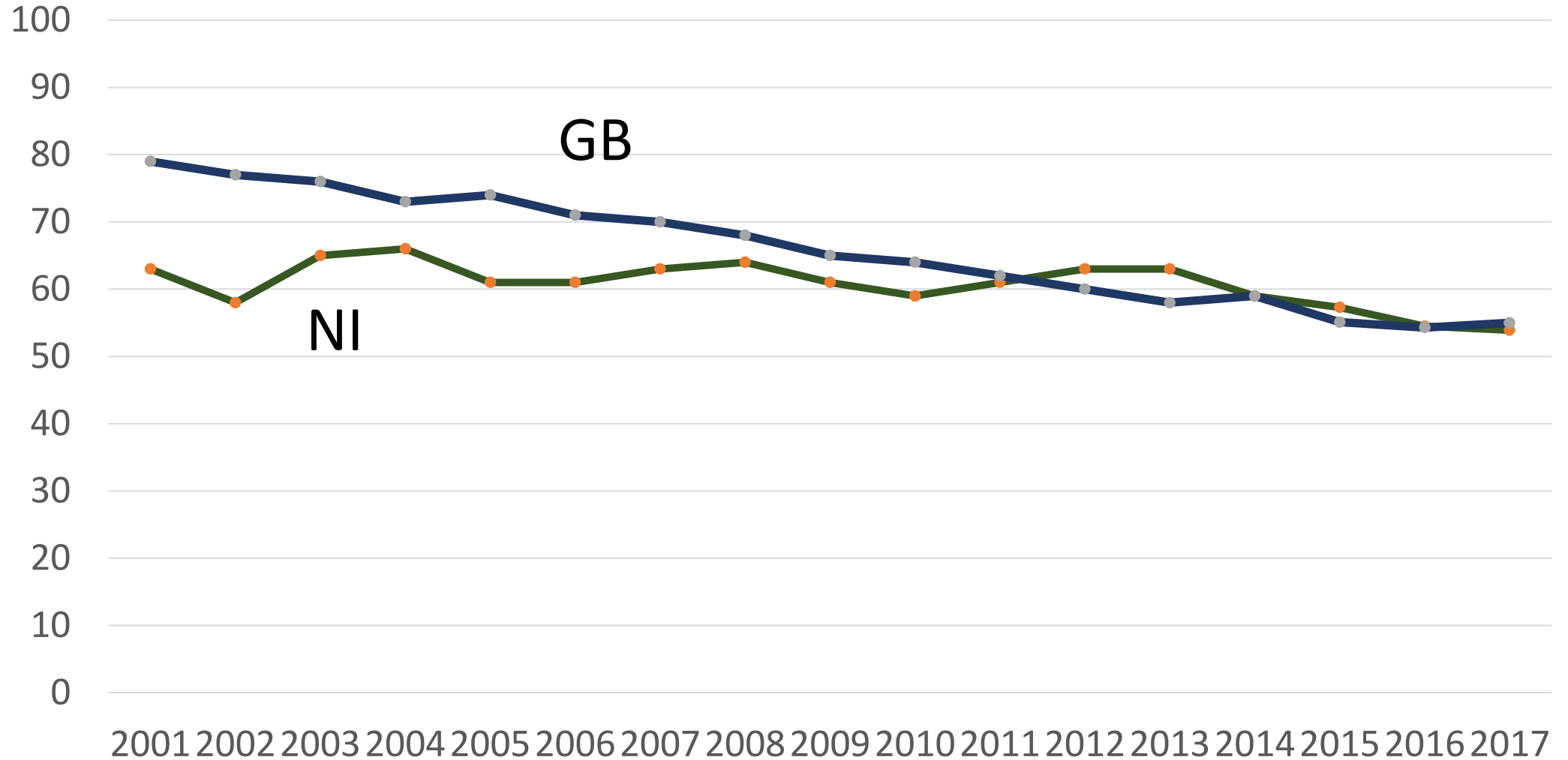
Sample boost

2017 Q4	2018 Q1	2018 Q2	2018 Q3	2018 Q4	2019 Q1
Wave 1	Wave 1	Wave 1	Wave 1	Wave 1	Wave 1
Wave 2	Wave 2	Wave 2	Wave 2	Wave 2	Wave 2
Wave 3	Wave 3	Wave 3	Wave 3	Wave 3	Wave 3
Wave 4	Wave 4	Wave 4	Wave 4	Wave 4	Wave 4
Wave 5	Wave 5	Wave 5	Wave 5	Wave 5	Wave 5
Achieved sample size 1,500	1,700	1,800	1,900	2,200	2,600

Sample boost - impact

- In February 2019, boosted data included and backdated to 2018 (at same time as reweighting and seasonal adjustment review)
- Revisions to data
 - Employment – 1.0pps
 - Inactivity – 0.8pps
 - Unemployment – 0.3pps
- Decrease in size of confidence intervals around estimates:
 - Employment +/- 1.8 to 1.4 pps
 - Inactivity +/- 1.8 to 1.4 pps
 - Unemployment +/- 1.0 to 0.7pps

Wave 1 Response Rates, NI GB, 2001-2017



Addressing response rates

Address Register

Eligible sample

Improved materials

W1 response rate

Achieving Cooperation

Training

W1 response rate

Incentive Trial

W1 response rate

Attrition

Questionnaire Changes

Quarterly questionnaire

- Main questions on every quarter (characteristics, labour market status)
- Some questions on one quarter only
- Eurostat ad-hoc module

Changes/additions/removals via the Labour Force Survey Steering Group

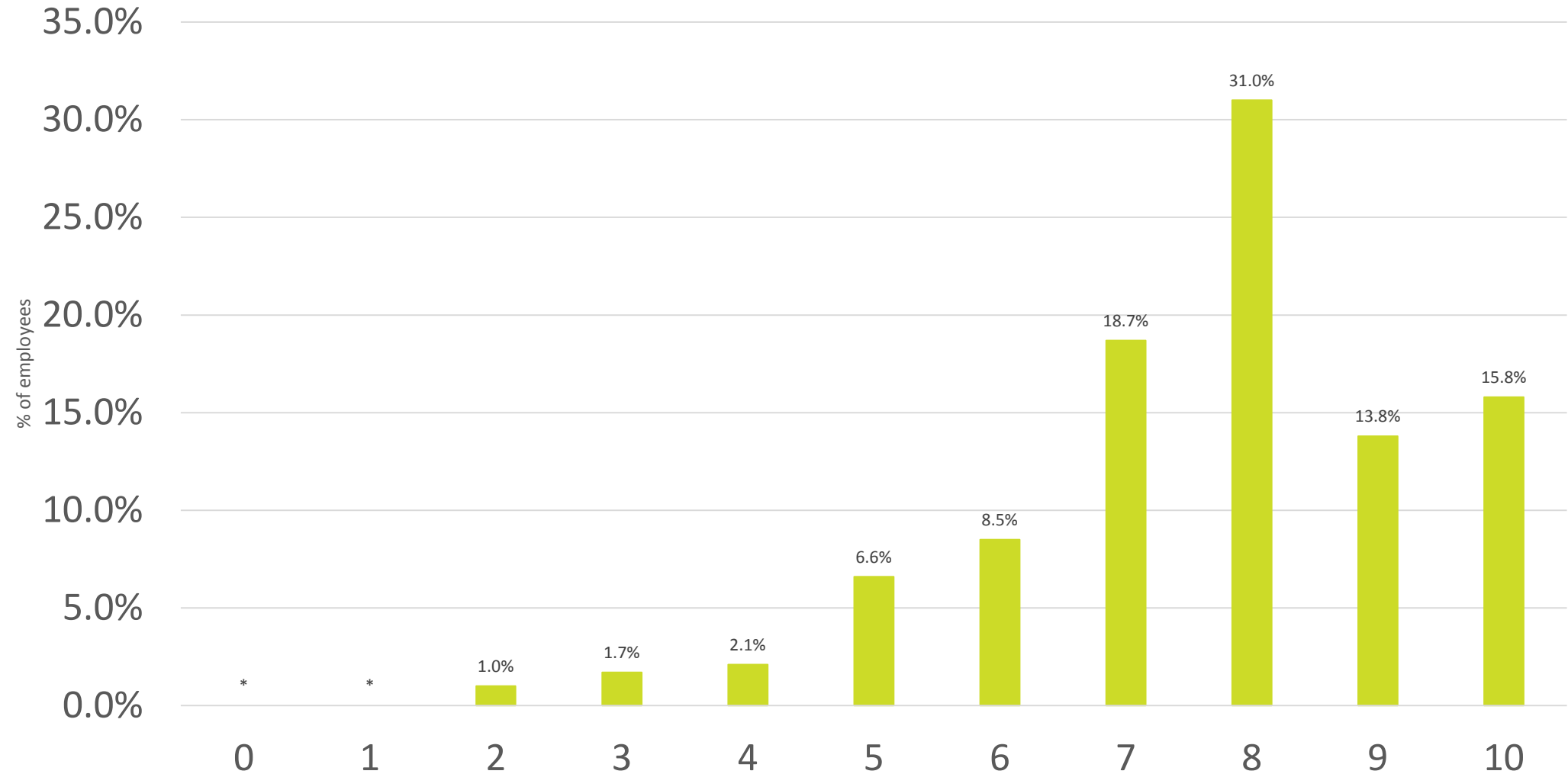
Job satisfaction

"Overall, how satisfied are you with your job?".

Responses were captured on a likert scale of nought to 10, where nought is “not at all satisfied” and 10 is “completely satisfied

NI only, from 2018

Job Satisfaction Score 2018



Eurostat ad hoc module 2019

The following set of questions forms part of a separate one-off study that looks at **work organisation** and **working arrangements** of your main job whether self-employed or in employment.

- Can you **decide** on the start and end of your **working times** or does the employer decide them...
- How easy or difficult is it for you **to take one or two hours off** work for personal or family matters within one working day...
- In the last two months, how often were you **contacted** on work matters during your leisure time...
- Is the number of **hours** you work or your presence at work **recorded**

Eurostat ad hoc module 2019

- How often do you have to work under **time pressure**.
- To what extent can you influence the **order of your tasks**.
- How long does it usually take you to **travel from home** to your main place of work.
- In your main job do you sometimes **work somewhere different** than your main place of work?
- How often do you **change your work place**

Longer term changes...

ONS Data collection transformation programme

- Move to admin data where possible
- Move to mixed mode (online first)
- Move to 'labour market system'

transformation not translation

Testing, testing, testing!

A series of large scale tests, ongoing since 2017

Test 1 – Communications, Materials & Online Uptake

Test 2 - Incentivisation & Online Uptake

Test 3 – Operational Test

Future testing.....

Next steps

Labour Market User Group, September 2019

- LFS update – operations and outputs
- LFS transformation – key uses
- ASHE – publication format, content
- Redundancies – review of statistical outputs
- BRES – testing of vacancy question